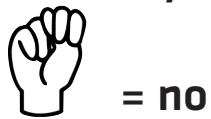
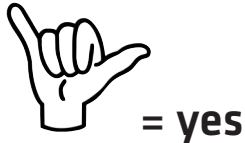


VOTERS' GUIDE

RACE FOR CITY COUNCIL

2005

KEY



QUESTIONS

LORETTA GRIFFIN - AT-LARGE



Griffin has no relevant experience for the city council seat but believes she shares many of the concerns of the average Portlander, which she hopes to address if elected. Griffin, 62, is the widow of former councilor John Griffin. She is a retired clerk for Hannaford supermarkets. She says she is running because she is concerned about the future of the city and the direction it is headed in.

CAROL SCHILLER - AT-LARGE



Schiller, a single mom with two children, is an artist with years of experience as a community activist. She has been endorsed by the Portland League of Pissed Off Voters, the Portland Green Independent Party, and Portland Green Representative John Eder. Schiller, 50, founded the Greater Portland Neighborhoods Coalition in 2003 and the University Neighborhood Organization in 2005 and was president of the Woodfords-Oakdale Neighborhood Association, in Portland. She is a graduate of the Portland School of Art (now MECA) and is self-employed.

ED SUSLOVIC - AT-LARGE



Suslovic, 45, served in the Maine State House of Representatives in 2003 and currently serves on several city and regional boards, including the Maine Community Preservation Advisory Committee, the United Way of Greater Portland Public Policy Committee, and the Southern Maine Affordable Rental Housing Coalition. Suslovic works as the Development Director of the Shalom House, a Portland home for the mentally ill, and was a consultant for low-income housing developments like Unity Village, in Bayside, and the Great American Neighborhood, in Scarborough. Suslovic has been endorsed by Portland state representatives Charlie Harlow and Glenn Cummings, homeless advocate Mark Swann, city councilor Donna Carr, and state senator Michael Brennan. He is married with three children.

1. Should the city council dictate the future of some city property sold to private developers like it is for the Sacred Heart School; for example, should Portland require developers to create affordable live-work spaces for artists?



2. Do you think Portland should let Peaks Island secede from the city?



3. Should Portland have an elected mayor?



4. Should Portland support the local option sales tax?



5. Should Portland invest in a more comprehensive public transit system which includes increased bus service, park and ride lots, and daily commuter service to the regional suburbs?



6. Is \$200,000 of city money too much to spend on a Portland skatepark?



7. Should the city financially support a New Year's Portland that goes to midnight (with fireworks)?



8. How many blue Portland trash bags do you use in one week?

5

1

1

9. Have you bought a piece of local art or paid a cover to see a local band in the past month?



10. Are chain stores welcome in the Old Port and downtown?



Check marks the box GET A VOTE ON, PORTLAND – AND TAKE THIS REFERENCE GUIDE WITH YOU

It's election time again, kiddies. That would be November 8, for those of you who have been living comfortably in a bubble for the past few months. Well, now's the time to bust out of that bubble, saddle up, and head to your district's voting area to cast your ballot like a good citizen (to find out where to vote call the Portland city clerk's office at 874.8610). You can register to vote at the polling place, as long as you bring proof of residency (like a bill or a bank statement) and some form of identification.

There are two important statewide refer-

enda on the ballot this year. We have Question 1, which seeks to undo protections for gays and lesbians statewide keeping them from being discriminated against for housing, employment, public accommodations, education, and credit. Remember, a "No" vote for this one means you think gays and lesbians should have equal rights. It's a little tricky. There's also Question 7, which would create a constitutional amendment to assess waterfront land used for commercial fishing at a different rate than if the land is strictly residential.

Besides the heavy state stuff this year, we also have three Portland school committee seats up for grabs and three city council seats. Since the city council represents the nearest branch of government where bitching about your neighbor's plans to expand their back porch can make a difference, we're once again providing you with our handy candidates chart. We asked the seven city council candidates, running in two districts and an at-large race, their thoughts on issues like affordable housing for artists, the local-option sales tax (in

which Portland would levy an extra tax on some services and items to pay for municipal expenses), and whether we should return to a city-funded late night New Year's Eve celebration, with fireworks. They could only answer yes, no, or undecided.

For more information on all the ballot questions, the candidates, and what we think of them, check out our endorsements on page 4.

And feel free to fold this bad boy up and take it with you to reference in the ballot box. We won't tell.

CHERYL LEEMAN - DISTRICT 4



Leeman, 57, has served seven consecutive terms on the city council and is running for her eighth. She is already the most senior member of the council. Leeman has been endorsed by Firefighters Local 740. She is a member of the Back Cove Neighborhood Association, the Portland Red Cross Board, and the Metro bus board. Leeman is single with two adult children; she works as the regional representative for Senator Olympia Snowe's Southern Maine district.

Leeman is single with two adult children; she works as the regional representative for Senator Olympia Snowe's Southern Maine district.

STEPHEN LOVEJOY - DISTRICT 4



Lovejoy has worked in the banking and finance fields for 30 years. At age 55, he is now teaching business development full-time at the University of Maine in Augusta. Lovejoy thinks his professional background will be a benefit to the council. He has served on the St. Patrick's School board and was a political lobbyist for the Maine Mortgage Bankers Association. He is divorced with three children. Lovejoy has been endorsed by Portland democratic state representatives Glenn Cummings, Ben Dudley, Charlie Harlow, John Brautigam, councilors Jill Duson and Jim Cloutier, and Portland state senators Ethan Strimling and Michael Brennan.

Lovejoy has been endorsed by Portland democratic state representatives Glenn Cummings, Ben Dudley, Charlie Harlow, John Brautigam, councilors Jill Duson and Jim Cloutier, and Portland state senators Ethan Strimling and Michael Brennan.

JAMES COHEN - DISTRICT-5



Cohen, 40, is running for his second term as a city councilor. A partner at the law firm Verrill Dana, Cohen is an energies and utilities lawyer who has also lobbied at the state house in Augusta. On the council, Cohen has been

the chair of the Transportation Committee, a member of the Metro board, and has served on the Community Development Committee. He is also the founding president of the North Deering Association. Cohen has been endorsed by state representative from Portland Joe Brannigan, Portland mayor and at-large councilor Jill Duson, former mayor Linda Abromson, the League of Pissed Off Voters, the International Longshormen's Association, and Portland Firefighters Local 740. He is married with two young children.

ALVIN SCHULMAN - DISTRICT 5



Schulman is a native of New York City who moved to Portland with his wife six years ago. He is 58 years old and works in store operations at Filenes. Schulman is a board member of the Portland Taxpayers Association and was the long-time vice president of the Jewish Community Council in Brooklyn, NY, where he worked as a community liaison. Schulman is married with four children.

Schulman did not make a photo available

Schulman is married with four children.

1	1.5	1.5	5